

Art Clay World, USA
4535 Southwest Highway
Oak Lawn, IL 60453
866-381-0100
www.artclayworld.com



Product Guide for **ART CLAY**[®] SILVER

**Complete information and images for the
Art Clay Silver and Gold Series**



Artwork: *Rose* by Art Clay Master Instructor Pam East, top; *Fossil Coral* by Art Clay Master Instructor Carol Babineau, bottom left; *With a Song in My Heart* by Art Clay Master Instructor Maria Martinez, bottom right.

Clay

Art Clay Silver Standard

- 8-10% shrinkage
- 92% silver, 8% binder and moisture
- Can be torch-fired at peach glow (length of time based on size)
- Can be fired on gas stovetop at peach glow for 5 minutes
- Can be rolled flat, sculpted, balled, snake-rolled, textured, cut/trimmed, and molded while wet
- Can be sanded, filed, carved, or shaved in dry greenware state
- Can be used to make paste or slip by adding water
- Fired product is 99.9% pure silver and can be polished up to a mirror finish or embellished with patina
- Available in 20g and 50g



Firing Schedule	
800°C/1472°F	30 minutes
850°/1560°F	20 minutes
870°/1600°F	10 minutes



Art Clay Silver Standard Slow Dry

- 8-10% shrinkage
- 92% silver, 8% binder and moisture
- Can be torch-fired at peach glow (length of time based on size)
- Can be fired on a gas stovetop at peach glow for 5 minutes
- Similar characteristics and workability to wet, dry, and fired Art Clay Silver Standard, but offers 5x longer working time than standard Art Clay
- In addition, Art Clay Standard Slow Dry can be extruded, braided, and woven
- Perfect for working tiny details
- Available in 20g and 50g



Firing Schedule	
800°C/1472°F	30 minutes
850°/1560°F	20 minutes
870°/1600°F	10 minutes



Artwork: Lentil Bead, Braided Silver Ring, and Textured Earrings all by Art Clay Master Instructor Jackie Truty

Clay

Art Clay Silver 650/1200 Low-Fire

- 8-10% shrinkage
- 92% silver, 8% binder and moisture
- Can be torch-fired at peach glow (time will vary by size)
- Can be fired on a gas stovetop at peach glow for 5 minutes
- Offers lower firing temperatures for gemstones, ceramics, or glass (kiln only)
- Available in 7g, 10g, 20g, and 50g



Firing Schedule	
650°C/1200°F	30 minutes
700°C/1290°F	15 minutes
780°C/1435°F	5 minutes

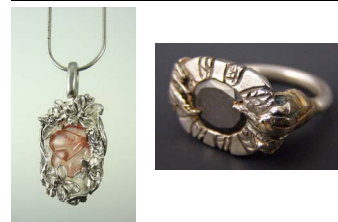


Art Clay Silver 650/1200 Slow Dry

- 8-10% shrinkage
- 92% silver, 8% binder and moisture
- Can be torch-fired at peach glow (time will vary by size)
- Can be fired on a gas stovetop at peach glow for 5 minutes
- Combines low firing temperatures with longer working time, increasing opportunities for multi-media use, gemstones, glass, and ceramics
- Available in 7g, 10g, 20g, and 50g



Firing Schedule	
650°C/1200°F	30 minutes
700°C/1290°F	15 minutes
780°C/1435°F	5 minutes

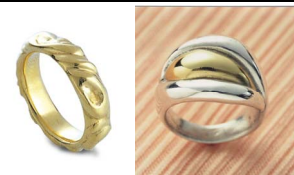


Art Clay Gold

- 15% shrinkage
- 95% gold powder, 5% binder and moisture
- Must be kiln-fired
- Available in 5g and 10g



Firing Schedule	
990°C/1813°F	60 minutes



Artwork: Gemstone Pendant courtesy of Aida Chemical Industries, *Pocket Full of Posies* silver and Dichroic glass pendant by Art Clay Master Instructor Jackie Truty; silver and sunstone pendant by Art Clay Senior Instructor Judi Hendricks; silver and garnet ring by Art Clay Senior Instructor Katie Baum; rings with gold clay courtesy of Aida Chemical Industries

Paste

Art Clay Silver Low-Fire Paste

- 8-10% shrinkage
- 80% silver, 20% binder and moisture
- Can be torch-fired at peach glow (time varies by size)
- Can be fired on gas stovetop at peach glow for 5 minutes
- Can be used to add texture, join pieces together, fill cracks, fix imperfections before firing
- Can be painted over organic matter, such as cork clay, leaves, buds, or pods, to capture the natural texture or shape
- Low firing temperature offers use with gemstones, glass, ceramics, or stoneware (kiln only)
- Fired product is 99.9% pure silver and can be polished up to a mirror finish or embellished with patina
- Available in 10g or 20g



Firing Schedule

650°C/1200°F	30 minutes
700°C/1290°F	15 minutes
780°C/1435°F	5 minutes



Art Clay Gold Paste

- 8-10% shrinkage
- 77% gold, 22.5% binder and moisture
- Can be applied to fired silver to add a golden layer
- Can be painted onto glass or ceramic to add or accent a design
- Fired product is 22k gold and can be burnished up to a mirror finish
- Available in 1.5g

Firing Schedule

800°C/1472°F	See directions in packaging for complete instructions
--------------	---



Artwork: Silver with patina elm leaf by Art Clay Senior Instructor Katie Baum; silver mulberry leaf by Art Clay Senior Instructor Judi Hendricks; gold and ceramic earrings by Art Clay Master Instructor Jackie Truty

Paste

Art Clay Silver Overlay Paste

- 8-10% shrinkage
- 90% silver, 10% binder and moisture
- Formulated for use on glass, ceramic, or other non-porous surfaces
- Can be applied to fired Art Clay Silver pieces to add detail or repair imperfections after firing
- Use sgraffito-style to create detailed images
- Used as an intermediary between glazed or unglazed bisqueware and other Art Clay Series products
- Available in 15g



Firing Schedule

650°C/1200°F	30 minutes
700°C/1290°F	15 minutes
780°C/1435°F	5 minutes



Art Clay Silver Oil Paste

- 8-10% shrinkage
- 90% silver, 10% binder and moisture
- Designed in order to repair pieces after firing
- Used to join seams in fine silver bezel wire when making bezels for non-fireable gemstones and other non-fireable materials
- Available in 10g

Firing Schedule

800°C/1472°F	30 minutes
--------------	------------



***Because this product is oil-based, it is not designed to be thinned with water. A proper diluent is provided.**

Artwork: Silver and ceramic mask and silver with glass pieces by Art Clay Master Instructor Jackie Truty

Syringe Type

Art Clay Silver Low-Fire Syringe

- 8-10% shrinkage
- 87% silver, 13% binder and moisture
- Can be torch-fired at peach glow (time varies by size)
- Can be fired on gas stovetop at peach glow for 5 minutes
- Can be used to add texture, join pieces together, fill cracks, or fix imperfections before firing
- Use to create filigree-style designs, outlines, dots, even script
- Can be applied over organic material, such as cork clay, to create hollow forms and beads
- Multiple nozzle sizes available for thick or very fine lines
- Low firing temperature offers use with gemstones, glass, ceramics, or stoneware (kiln only)
- Fired product is 99.9% pure silver and can be polished up to a mirror finish or embellished with patina
- Available in 5g or 10g



Firing Schedule	
650°C/1200°F	30 minutes
700°C/1290°F	15 minutes
780°C/1435°F	5 minutes



Artwork: Silver and ceramic pendant, and *Infinity Brooch* silver and gemstone brooch by Art Clay Senior Instructor Katie Baum; silver syringe beads by Art Clay Master Instructor Jackie Truty

Paper Type

Art Clay Silver Paper Type

- 8-10% shrinkage
- 96% silver, 4% binder
- Can be used alone, including origami-style, for entire forms
- Can be used to create bezels for stones that cannot be fired in place
- Pieces can be punched or cut, then appliquéd onto low-fire greenware
- Strips can be braided or woven to create textures or patterns
- Can be embossed
- Must be kiln-fired if used alone, but can be torch or stovetop fired if small sections have been appliquéd
- Fired product is 99.9% pure silver and can be polished up to a mirror finish or embellished with patina
- Does not require drying time before firing
- Available in 10g



Firing Schedule

800°C/1472°F 30 minutes



**Firing schedules list recommended minimum firing times and temperatures.
All Art Clay Silver Series products may fire up to 870°C/1600°F
with the exception of Oil Paste.**

Artwork: Paper Type silver brooch by Art Clay Master Instructor Jackie Truty; Paper Type
appliquéd inro pendant by Art Clay Senior Instructor Katie Baum

Product Guide for
ART CLAY[®] SILVER
has been brought to you by
Art Clay World, USA, Inc.

For ALL your metal clay needs:

Art Clay World, USA
4535 Southwest Highway
Oak Lawn, IL 60453
Toll-free 866-381-0100
Fax 708-636-5408
www.artclayworld.com